

INTERFACES

RS485

Ethernet

XBEE Radio

USB



FEATURES

- Reading data from meters (heat, water, gas, electricity...), sensors and controllers.
- Supported interfaces: RS485, Ethernet, XBEE Radio.
- Remote communication over Ethernet (RJ45).
- Galvanically isolated interfaces and power supply.



Application

Industrial monitoring



Commercial monitoring



Residential monitoring



Water/Heat metering



Electricity metering



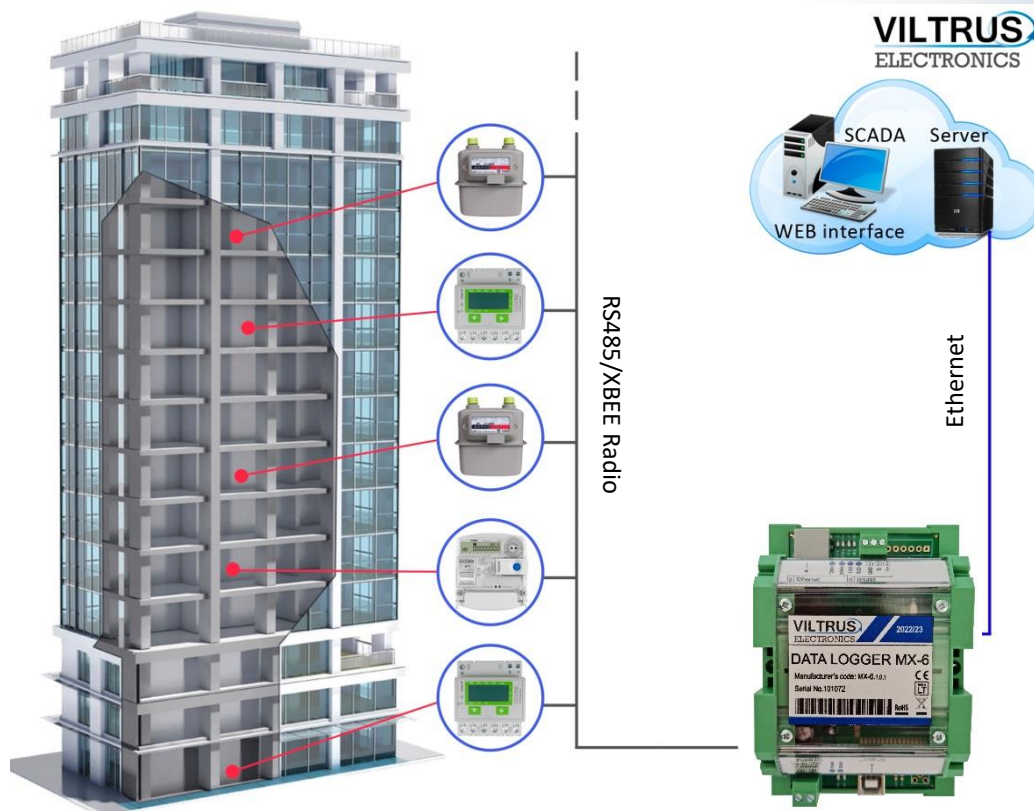
Gas metering



Sensors monitoring



MX-6 Data Logger is dedicated for data exchange between Radio XBEE 2.4GHz and Ethernet and RS485 (Modbus RTU protocol).



TECHNICAL SPECIFICATIONS

Description	MX-6 Data Logger
CPU	ARM Cortex M4
Flash	archive storage 8 MB, battery backup, valid up to 5 years
Interfaces	
Ethernet	10/100 Mb twisted pair, up to 100m
RS485	up to 1.2 km, max 32 transceivers, speed up to 19.2 Kbits/s (Optional)
Radio	2.4GHz XBEE Digimesh
USB	ver. 2,0, type B
Protocols	
Modbus RTU, Modbus TCP/IP, FTP, MQTT, IP, ICMP, UDP, TCP, ARP, SNTP	
General	
Power supply	9-36V
Power consumption	<200mA
Physical characteristics	
Dimensions	77x128x50 mm
Weight	150g
Mounting type	DIN35
Protection type	IP20
Climate conditions	
Operating temperature	-25 to +60°C
Storage temperature	-40 to +60°C
Humidity range	5 – 95%, non-condensing
Programing and updating	
Remote	Ethernet
Locally	USB
LED indication	
Power	
Serial ports read/write for each port	
Ethernet status	
Other features	
Real time clock	+
Warranty period	2 years

ORDERING CODE 702.053.A.B.C

A - Ethernet

0	None
1	Ethernet

B – XBEE Radio

0	None
1	XBEE

C – RS485

0	None
1	RS485